



ASC-350 Series User Manual



<http://www.GCCworld.com>

NOTICE

GCC reserves the right to modify the information contained in this user manual at any time without prior notice; un-authorized modification, copying distribution or display is prohibited. All comments, queries or suggestions concerning this manual please consult with your local dealer.

Release Note

Version	Release Date	Change
1.0	Jun, 2026	First version

Table of Contents

1	Important Information	1
2	Overview	2
3	Get Started	3
3.1	Package Item.....	3
4	Installation	6
4.1	Install Paper Tray.....	6
4.2	Install Tool Head	7
4.3	Install Wi-Fi Antenna (Available only in the U.S., U.K., and EEA regions)	7
4.4	Connect ASC-350	8
4.5	Software Installation	9
4.5.1	System Requirements.....	9
4.5.2	CameraCut Installation.....	9
5	Touch Panel.....	15
5.1	Home Page.....	16
5.2	Set	16
5.2.1	Camera	17
5.2.2	Wi-Fi (Available only in CE-RED, UKCA, and FCC certified regions).....	17
5.2.3	Advanced Settings	20
5.2.4	General Settings	25
5.2.5	Count Cutting	26
5.2.6	Sys Information	26
5.3	QR	27
5.4	UDisk	27
5.5	Force/Speed	27
5.6	Favorites.....	28
6	Operation.....	30
6.1	Data Transfer Methods	30
6.1.1	Transfer Data by USB Port.....	30
6.1.2	Transfer Data by TCP/IP	31
6.1.3	Transfer Data by U-File (USB flash drive).....	33
6.2	General Cutting Operation	35
6.3	Print and Cut Operation	37
6.3.1	Add registration marks and a QR Code for Printing	37
6.3.2	Output the file.....	41
6.4	Perforation Cutting (Dashed Line Cutting) Operation	42
6.5	Creasing Operation (ASC-350D only).....	44
7	Appendix	47
7.1	ASC-350 Series Specification.....	47

1 Important Information

Thank you for purchasing the GCC ASC-350 Series Auto Sheet Cutting Plotter. Before you use the cutting plotter, please make sure that you have read the safety precautions and instructions below.



Caution

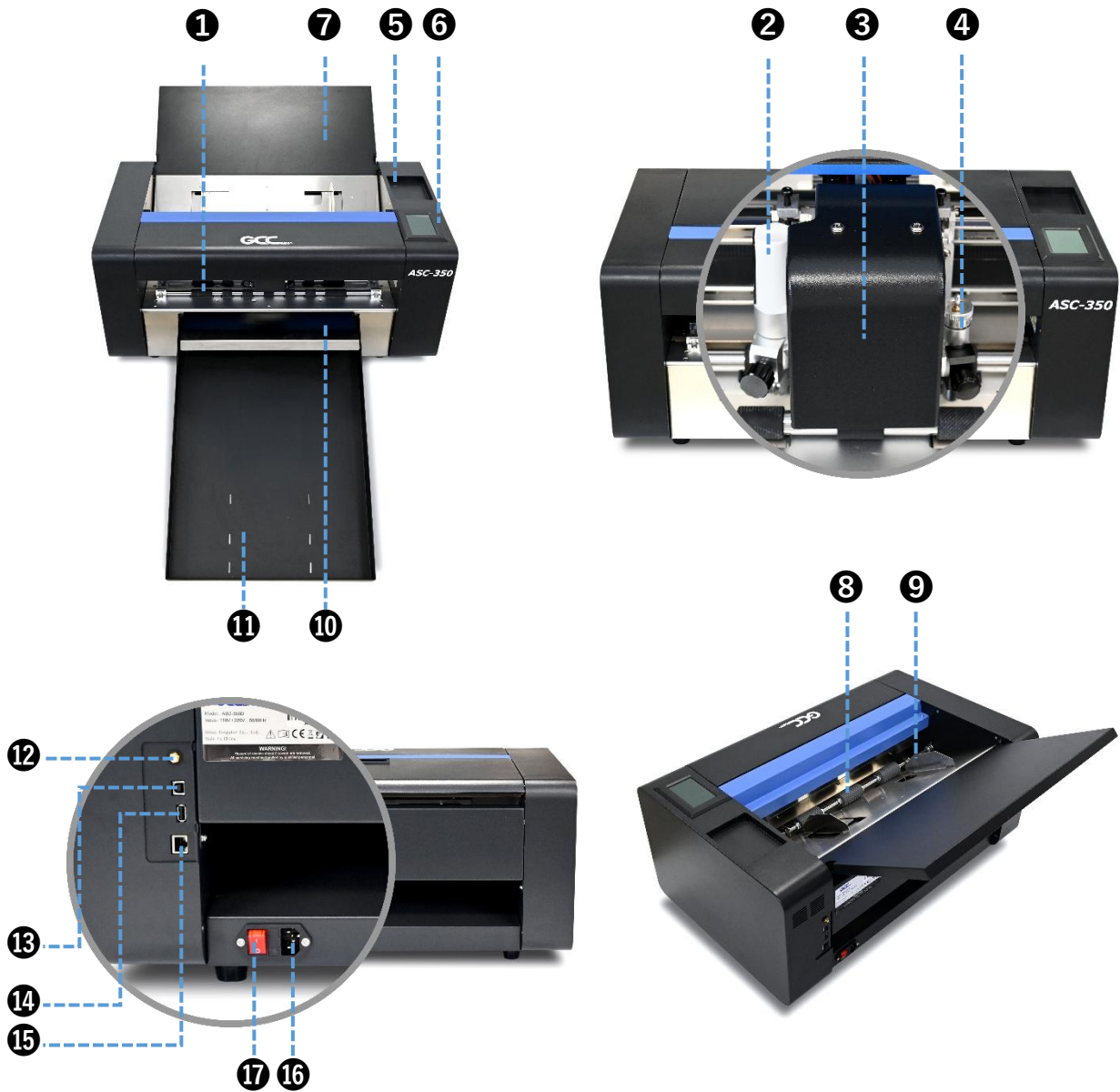
SAFETY PRECAUTIONS!

- For professional use only.
- For safety concerns, please always hold the cutter firmly from the bottom while moving it.
- Install in a level and stable location. Failure to do so may result in falling of the machine, leading to injury.
- Do not shake or drop the blade holder, a blade tip can fly out.
- Beware of moving carriage: The cutting carriage is dangerous because it moves at high speed. Do not put your hands near it.
- Exercise caution to avoid becoming caught: Prevent clothing, hands, hair, neckties, etc. from inadvertently getting close to the rotating parts during operation.



- Always connect the power cable to a grounded outlet.
- Always use the accessory power cable which is provided. Do not wire the power cable so that it becomes bent or caught between objects.
- Do not connect the power cable to branching outlet to which other machines are also
- connected, or use an extension cable. There is danger of overheating and of mis-operation of the machine.
- Keep the tools away from children where they can reach

2 Overview



1	Spiked Wheel	10	Paper Distribution Plate
2	Rotary Wheel Creasing Tool	11	Paper Output Tray
3	Carriage	12	Wi-Fi Antenna
4	Blade Holder	13	USB Port
5	Tool Tray	14	U-Disk Port
6	Touch Screen	15	Ethernet Port
7	Paper Feeding Tray	16	Power Port
8	Paper Feeding Shaft	17	Power Switch
9	Side Paper Guide	16	










3 Get Started

3.1 Package Item

Remove your ASC-350 Series from the package and place it onto an even and stable worktable.

Check if the following items are included in the accessory package, if there are missing parts, please contact your dealer for further assistance.



ASC-350 Checklist

No.	Name	Picture	Quantity (PCS)
1	Blade holder with 45° blade		1
2	Blade box set (1 x 45° blade, 2 x 58° blade)		1
3	Pen holder with pen (for right head)		1
4	Pen		1
5	USB cable		1
6	Power cord – Europe plug		1
7	Power cord – U.S plug		1
8	Wi-Fi Antenna		1
9	Cutting pad		1

10	Paper support		1
----	---------------	---	---

ASC-350 Checklist

No.	Name	Picture	Quantity (PCS)
1	Creasing tool		1
2	Rotary wheel creasing tool		1
3	Blade holder with 45° blade		1
4	Blade box set (1 x 45° blade, 2 x 58° blade)		1
5	Pen holder with pen (for right head)		1
6	Pen		1
7	Pen holder with pen (for left head)		1
8	USB cable		1
9	Power cord – Europe plug		1
10	Power cord – U.S plug		1
11	Wi-Fi Antenna		1

12	Cutting pad		1
13	Paper support		1

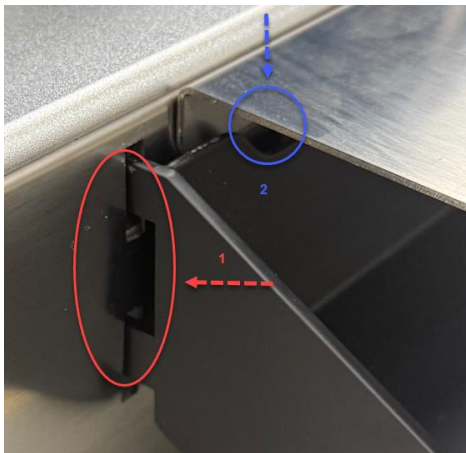
Applicable Models:

- ASC-350: Right Head Only
- ASC-350D: Right Head & Left Head

4 Installation

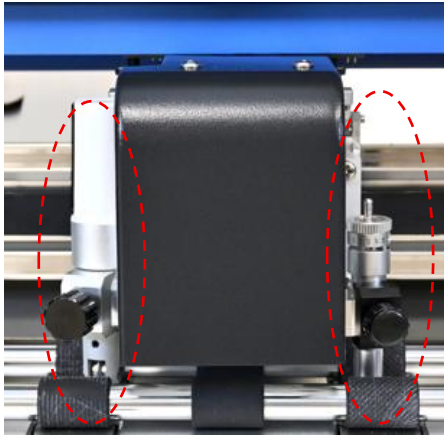
4.1 Install Paper Tray

- 1) Align drawer pins and push until locked.
- 2) Secure tray on mounting screws.



4.2 Install Tool Head

- 1) Rotate clamp counterclockwise.
- 2) Insert tool vertically.
- 3) Rotate clockwise to lock.



4.3 Install Wi-Fi Antenna (Available only in the U.S., U.K., and EEA regions)

- 1) Insert antenna and rotate clockwise to secure.



4.4 Connect ASC-350

- 1) Make sure ASC-350 Series is placed on a stable worktable.
- 2) Connect the ASC-350 by firmly inserting the power cord connector into the cutter's power socket, and then plug the power cord into a wall outlet.



- 3) Turn on the power switch, then wait for the LED light up and the screen to Activate.



- 4) After the display activates, the carriage will move to the starting point and complete the initialization reset.
- 5) After initialization is complete, enter main interface, machine ready for normal operation.

Note

- ✓ After the machine is powered on, the carriage will automatically perform an initialization process. Do not touch any moving parts or place your hands inside the machine during this process, as it may cause personal injury.

4.5 Software Installation

4.5.1 System Requirements

- CameraCut Software

Processor	1 GHz or above
DRAM	1 GB RAM or above
HDD	200 MB of free hard drive space
Operating System	Windows XP, 7, 8, 10, & 11

- CorelDRAW Plugin
CorelDRAW X4 – 2025
- Adobe Illustrator Plugin
Adobe Illustrator CS6 – 2025

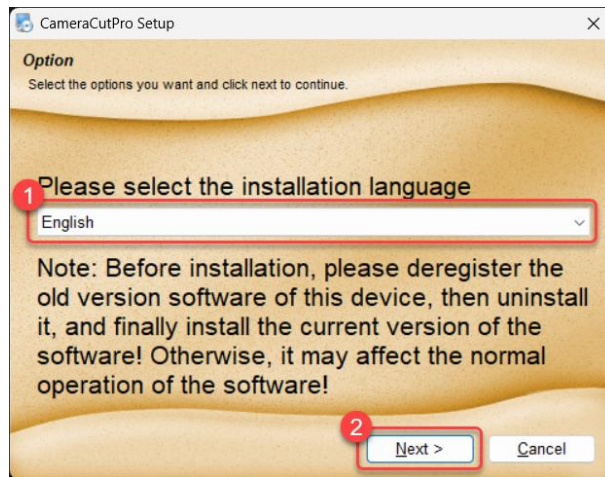
4.5.2 CameraCut Installation

- 1) Visit GCC website and go to **SUPPORT** page to download the related items.

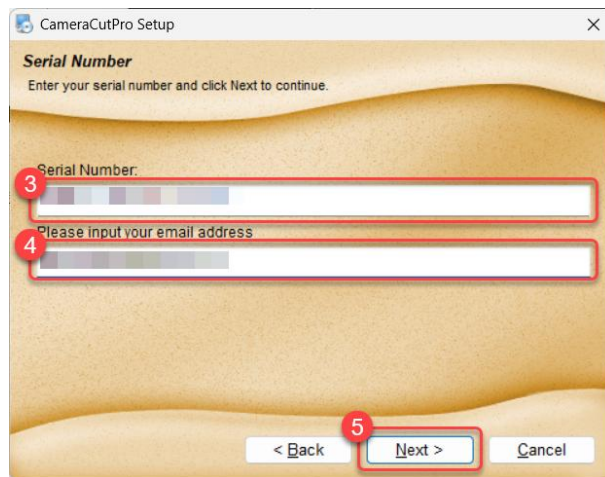
(<https://www.gccworld.com/download.php>).

You can use search function or directly click the product category to select your model.

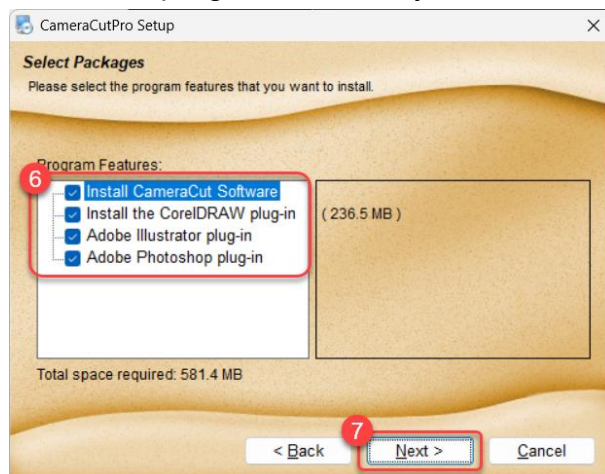
- 2) Download **CameraCut** to start the installation. Select your preferred language, then click **Next** to continue.



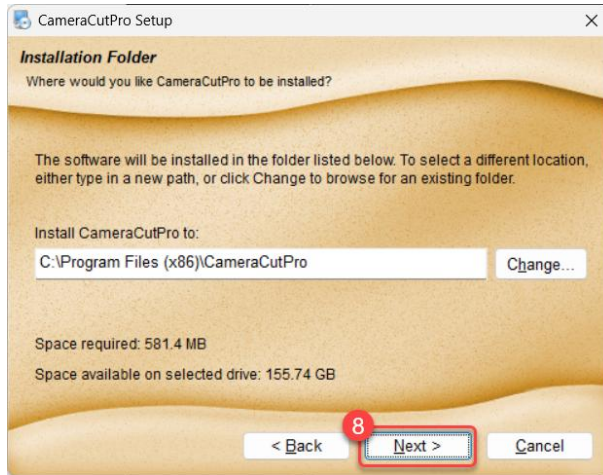
- 3) Enter the serial number and email address, then click **Next** to continue.



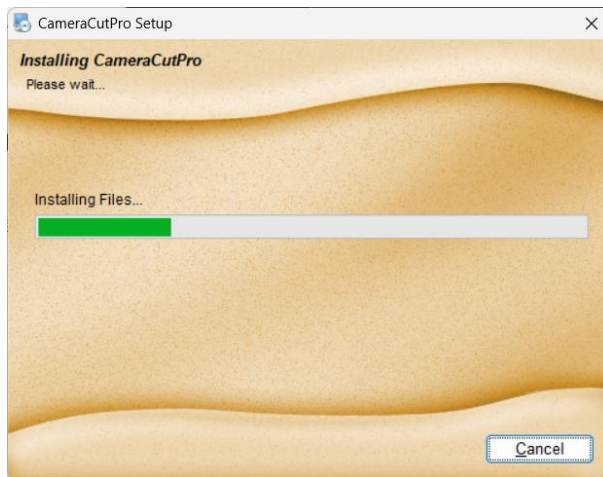
- 4) Select the program features you want to install.



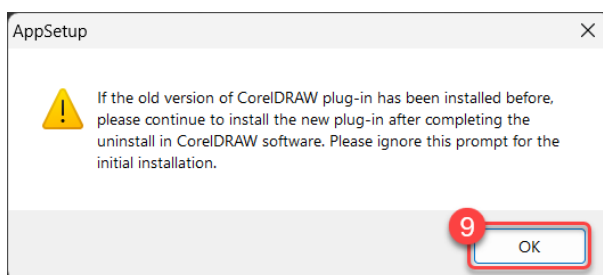
- 5) Set the installation path and click **Next** to continue.



- 6) CameraCut is installing...




- 7) The installation will display an AppSetup window reminding you to uninstall the old CoreIDRAW plug-in before installing the new version. Click OK to continue.

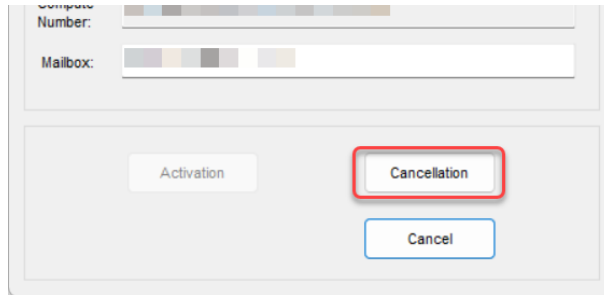



If you would like to uninstall the old plugin in, please follow the steps below.

A. Run CorelDRAW and make sure the plugin is running.

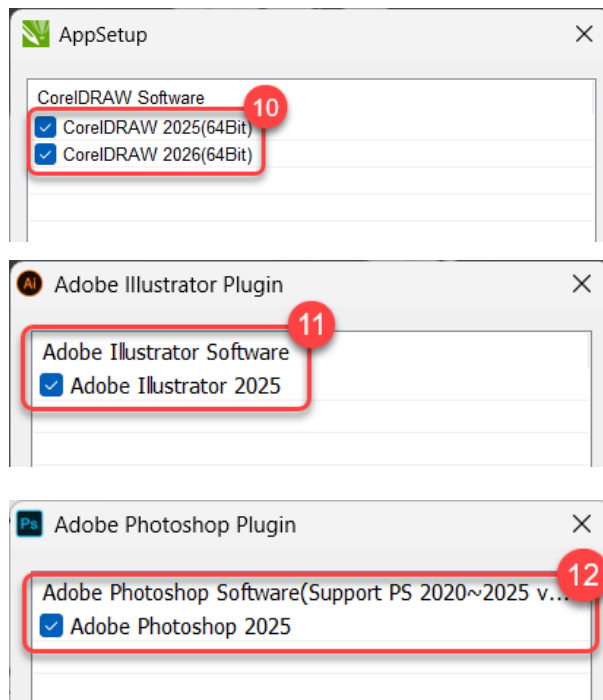
B. Click  **Active/Deactive Software** button to deactivate the plugin. The window will appear.

C. Click the **Cancellation** button to deactivate it.

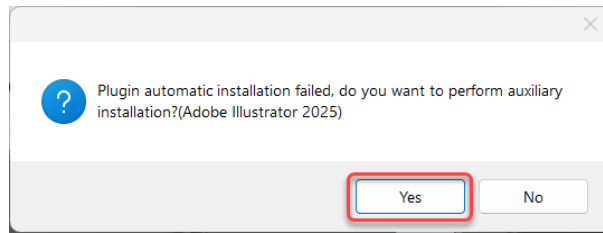


D. Click the  **uninstall Plugin** button to uninstall the plugin from the CorelDRAW.

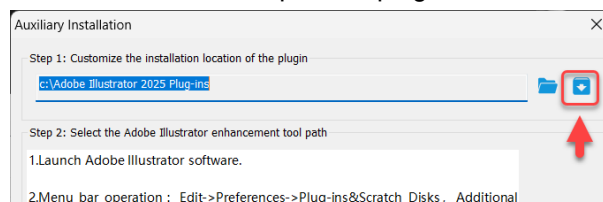
8) The installer will automatically detect the installed versions of CorelDRAW, Illustrator, and Photoshop on your computer/laptop. Select the version you want to install the plugin for, then click **Install** to continue.



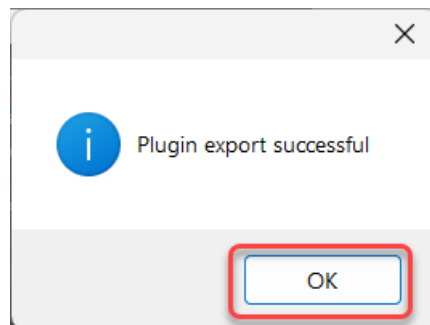
If the installation displays a message indicating that the Illustrator plug-in installation has failed, click **Yes** and follow the steps below to install it using Auxiliary Installation.



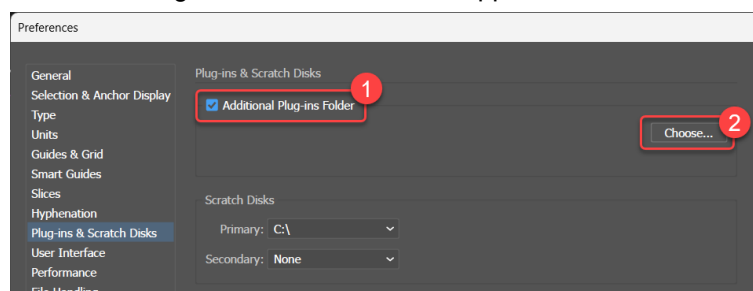
- A. After clicking the Yes button, the Auxiliary Installation window will appear.
- B. We recommend assigning the folder to C:\Adobe Illustrator 2025 Plug-ins. Then click the **Install** button to export the plugin to the folder.



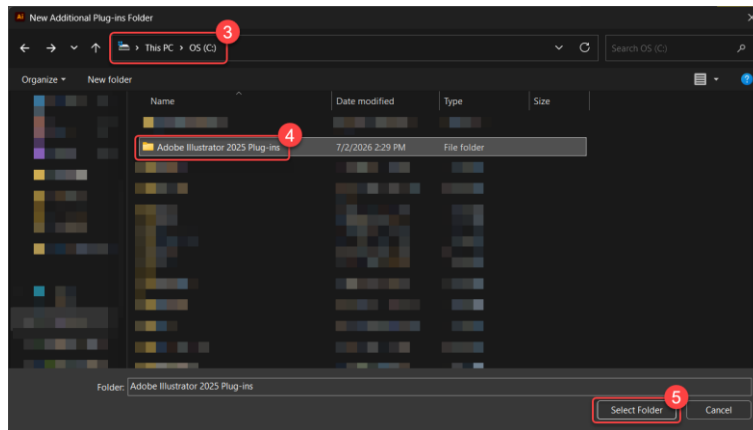
- C. A "Plugin export successful" message will appear after the plug-in has been exported.



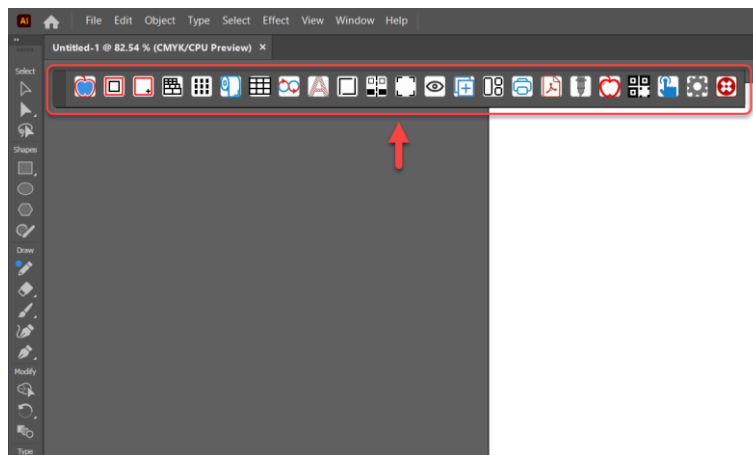
- D. Run Adobe Illustrator and go to **Edit > Preferences > Plug-ins & Scratch Disks...**. The Preferences window will appear.
- E. Select Additional Plug-ins Folder, then click **Choose...** to assign the folder. The New Additional Plug-ins Folder window will appear.



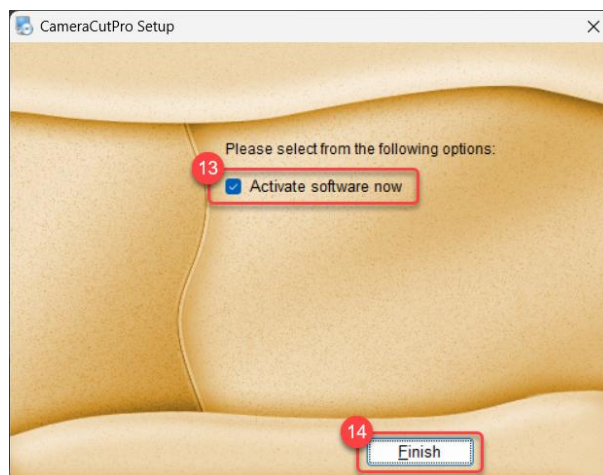
- F. Select the folder C:\Adobe Illustrator 2025 Plug-ins, then click **Select Folder** to assign it.



- G. Adobe Illustrator will display the selected path. Restart Illustrator for the change to take effect. Then you will see the plug-in running in Illustrator.



- 9) After installation is completed. Select **Activate software now**, then click **Finish** to continue.



- 10) Enter the activation code and your email address, then click **Activation** button to activate the software.

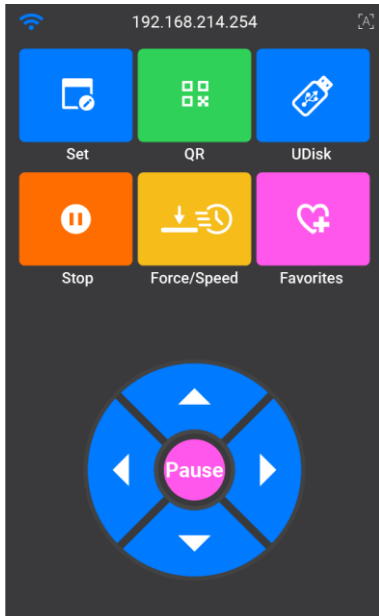
NOTE:









- One activation code can be used on up to three computers. The activation cannot be transferred to another computer, even if the software is deactivated on the original computer.
- You can reactivate the activation code on the same computer an unlimited number of times.

- 11) You will receive a conformation email; we recommend keeping this email in case the activation code is lost.

5 Touch Panel

5.1 Home Page

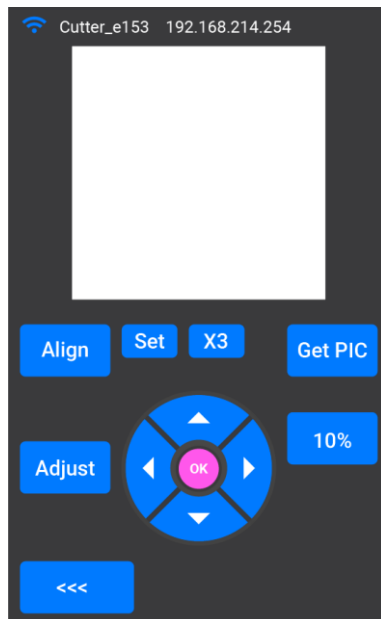


Function		Function Explanation
Set		Enter the Settings page. Please refer to Chapter 5.2 for more details.
QR		Read the QR code on the media and match the corresponding file from the USB flash drive.
UDisk		Browse and select a file from the USB flash drive.
Stop		Stop the job.
Force/Speed		Enter the Force and Speed settings page. Please refer to Chapter 5.5 for more details.
Favorites		Enter the Favorites page to quickly run a saved job. Please refer to Chapter 5.6 for more details.
Arrow Keys		Move the drums using the UP and DOWN keys. Move the carriage using the LEFT and RIGHT keys.
Pause		Pause the job.

5.2 Set

5.2.1 Camera

This page allows users to verify the camera function and check the camera field of view (FOV).



5.2.2 Wi-Fi (Available only in CE-RED, UKCA, and FCC certified regions)

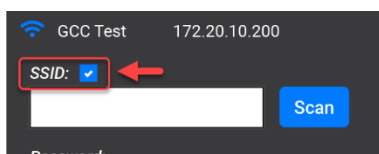
This page allows users to connect the machine to a Wi-Fi network. Please follow the steps below to complete the setup.

NOTE:

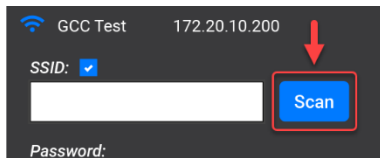
Before setting up Wi-Fi, connect the Wi-Fi antenna to the machine to ensure the best signal quality. The Wi-Fi antenna can be found in the accessory box.



- 1) Select the SSID checkbox to enable the Wi-Fi function.



- 2) Click the **Scan** button to scan for available Wi-Fi SSIDs.

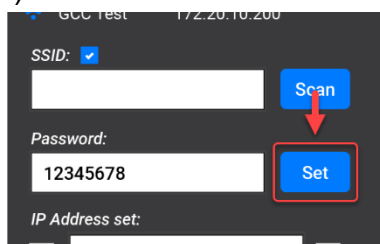


- 3) Select an SSID and click the **Apply** button to confirm.

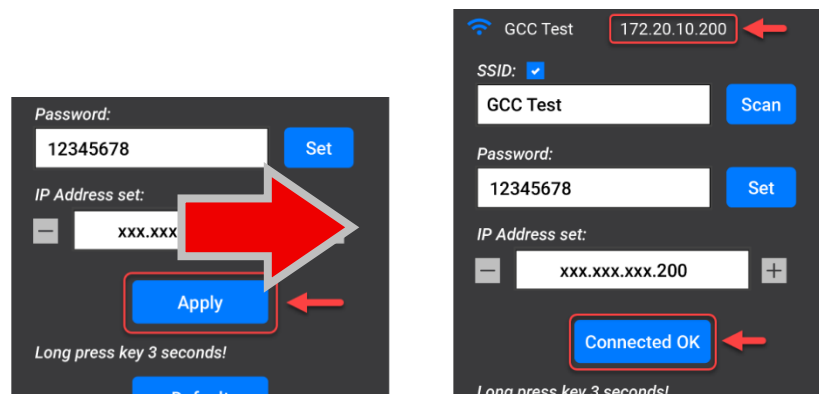
NOTE:

The ASC-350 series supports only 2.4 GHz Wi-Fi. Please make sure your Wi-Fi network is using the 2.4 GHz band before connecting.



- 4) Click Set Password to enter the Wi-Fi password.

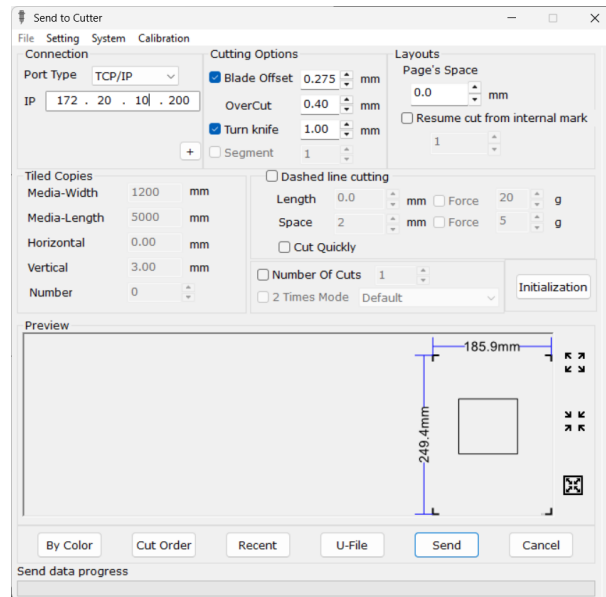


- 5) Click the Apply button to connect to the selected SSID. When the connection is successful, the screen will display “Connected OK,” and an IP address will be shown at the top of the screen.

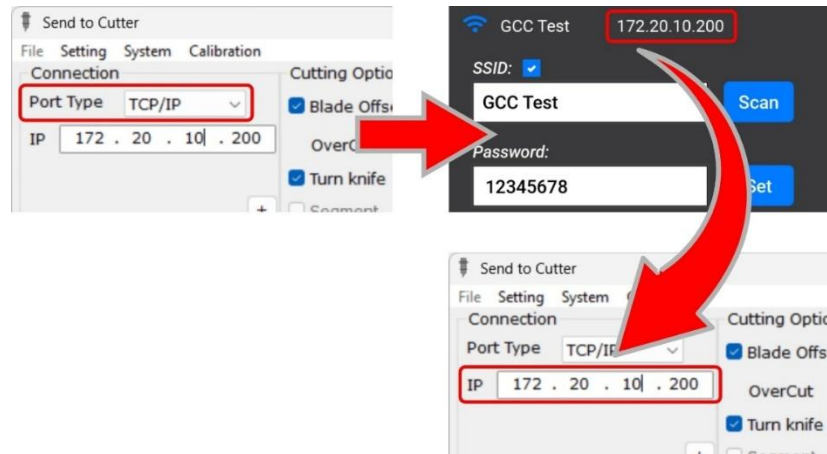


- 6) Make sure your computer/laptop is connected to the same Wi-Fi network.
- 7) Run CorelDRAW, Illustrator, or CameraCut, and open your artwork.

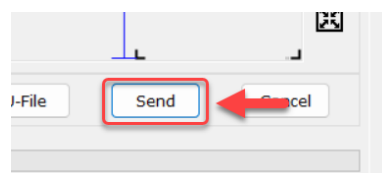
- 8) Click the  **Cut Contour** or  **Cut/Polish** button. The Send to Cutter window will appear.



- 9) Select TCP/IP from the Port Type drop-down menu, and make sure the IP address is the same as the machine IP address. If not, change it to match the machine IP address.

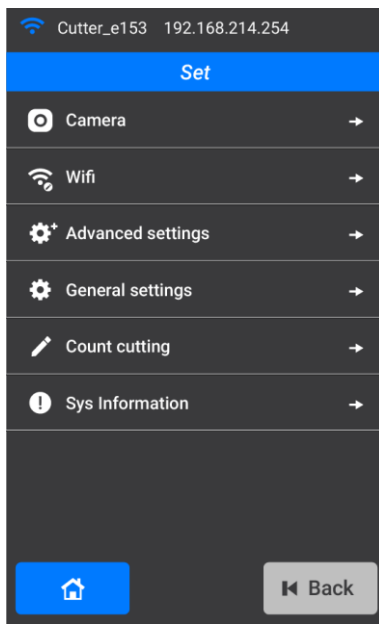


- 10) After setting the IP address, click the Send button to send the file to the machine.



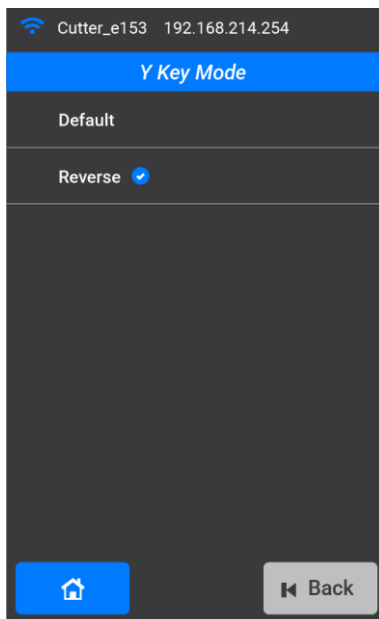
5.2.3 Advanced Settings


This page allows users to configure advanced settings.




- **Y Key Mode**

This function allows users to set the Y-axis direction.

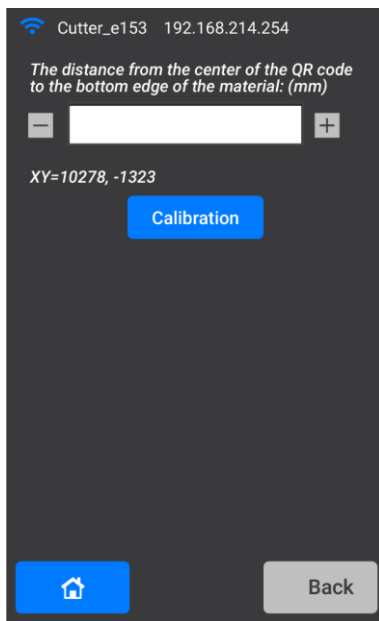


Function	Function Explanation
Default	<p>When the down key is pressed, the drum feeds the media inward.</p> 

Reverse	<p>When the down key is pressed, the drum feeds the media outward. This is the factory default setting.</p> 
---------	--

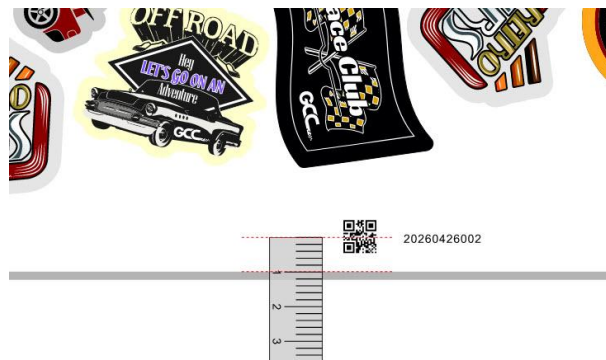
● **QR Calibration**

This function allows users to calibrate the QR code reading area.

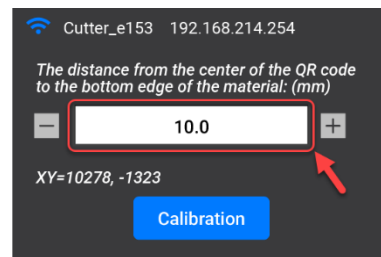


Please follow the steps below to complete the calibration.

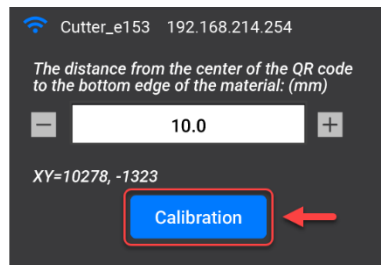
- 1) Measure the bottom margin of the QR code. Measure the distance from the media edge to the center of the QR code. In this example, the bottom margin of the QR code is 10 mm.



- 2) Adjust the value on the calibration page to match the measurement result.



- 3) Place the printed media with a QR code on the media tray.
- 4) Click the Calibration button to feed the media to the working area. The camera field of view (FOV) will then be displayed on the touch panel.




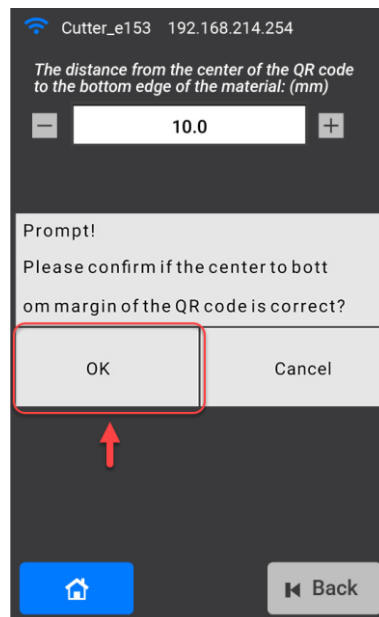
- 5) Press the arrow keys to move the red cross and align it with the center of the QR code. Then click the OK button. The blue cross should be aligned with the center of the QR code. If not, repeat Steps 4 and 5 until it is properly aligned.



- 6) After calibration, the blue dashed X/Y lines should intersect at the center of the QR code. If not, repeat Steps 4 and 5 until they are properly aligned.

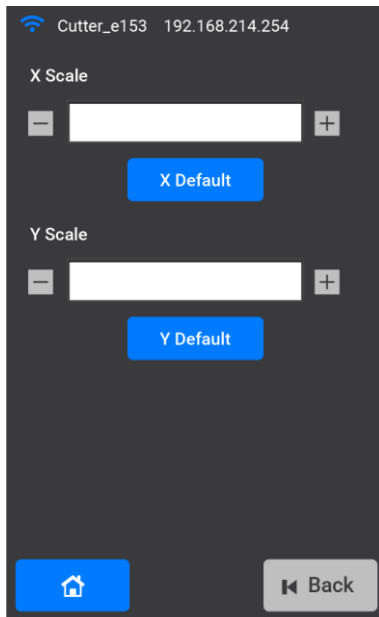


- 7) Click the  button to return to the Calibration page.
- 8) Click the **Back** button to return to the previous page. When the confirmation message appears, click the **OK** button to complete the calibration. The bottom margin of the QR code was already confirmed in Steps 1 and 2.



● Scale

This function allows users to adjust the X scale and Y scale.



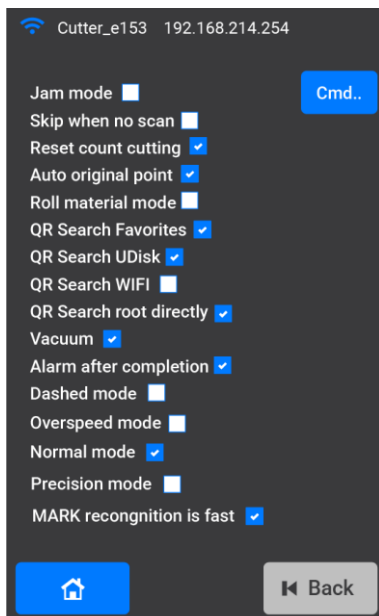
Click the **X Default** or **Y Default** button to restore the corresponding scale to its default value if needed.

● Advanced Options

This page allows users to configure advanced machine settings.

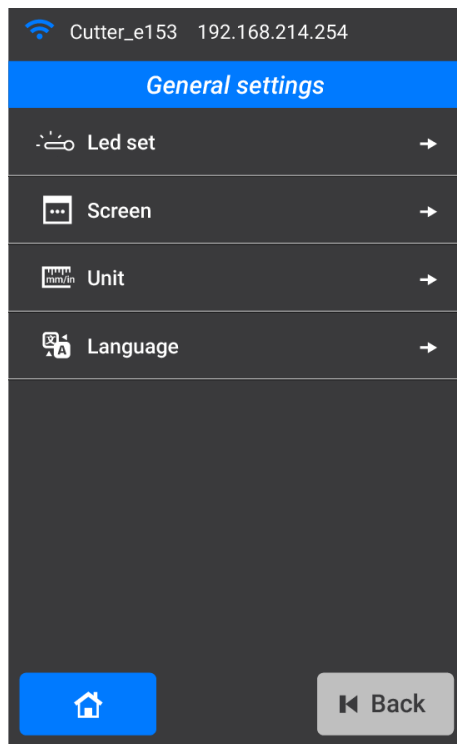
We recommend keeping the default settings unless you fully understand their functions.

The following picture shows the default settings for your reference if you need to restore them.



5.2.4 General Settings

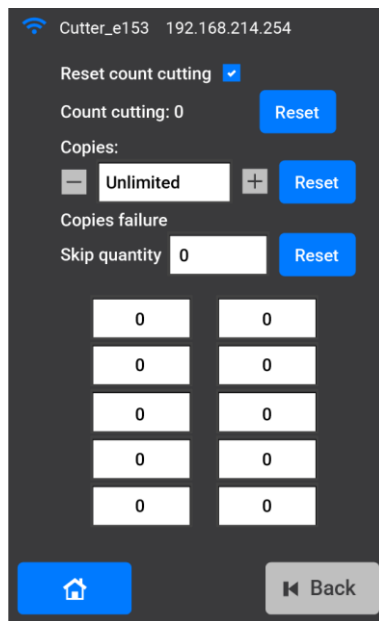
This page allows users to set general settings



Function	Function Explanation
LED Set	Allows the user to adjust the brightness of the LED light.
Screen	Allows the user to adjust the brightness of the touch panel.
Unit	Allows the user to set the unit for the touch panel interface.
Language	Allows the user to set the language for the touch panel interface. Nine languages are available: English, Spanish, Danish, Hungarian, Turkish, Korean, Italian, Russian, and Japanese.

5.2.5 Count Cutting

Set the number of copies for the job.



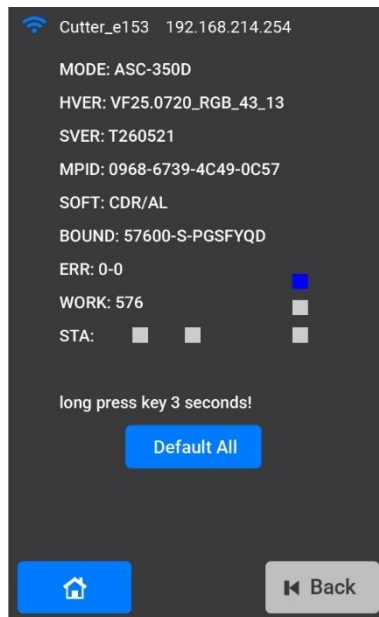
You can adjust the value in the **Copies** field. The system will stop automatically when the specified number of copies has been completed.

The machine will emit a sound in the following situations:

- ✓ The specified number of copies has been completed.
- ✓ The number of copies has been set, but there is not enough media on the tray.

5.2.6 Sys Information

This page displays the machine system information for your reference.

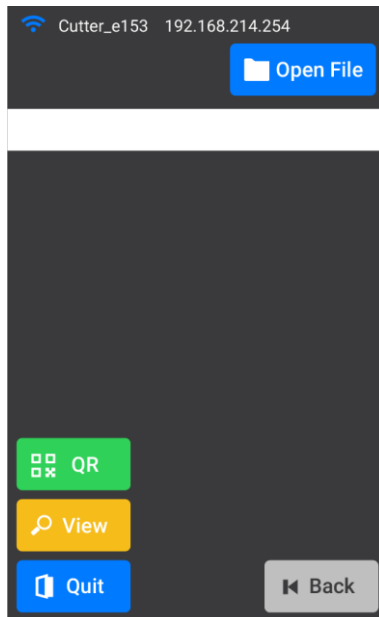



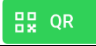


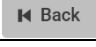
Press the **Default All** button to restore the factory default settings if needed.

5.3 QR

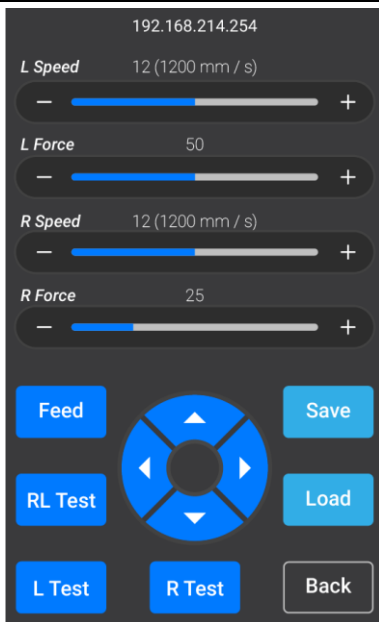
This function reads the QR code on the media and matches it with the corresponding *.plt file from the USB flash drive. Users can convert files to *.plt format using CameraCut software or the CorelDRAW/Illustrator plugin. Please refer to Chapter 6.1 for the operation.


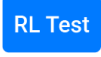
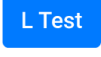
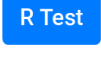


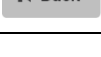
5.4 UDisk



Function		Function Explanation
Open File		Browse the USB flash drive and double-click to select a file. The file name will be displayed in the field.
QR		Run the job through the QR workflow.
View		View the graphic/artwork before running the job.
Cut		Run the job.
Back		Return to the previous page.

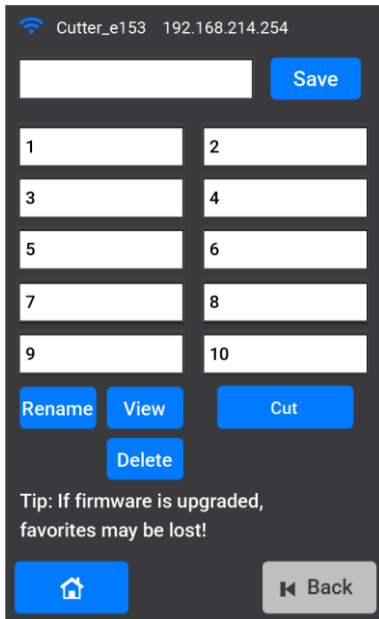
5.5 Force/Speed




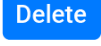


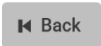


Function		Function Explanation
L Speed (ASC-350D only)		Set the speed parameter for the left-side tool.
L Force (ASC-350D only)		Set the force parameter for the left-side tool.
R Speed		Set the speed parameter for the right-side tool.
R Force		Set the force parameter for the right-side tool.
Feed		Feed the material to the working area.
RL Test		Run a test to check the speed and force settings for both the left-side and right-side tools.
L Test (ASC-350D only)		Run a test to check the speed and force settings for the left-side tool.
R Test		Run a test to check the speed and force settings for the right-side tool.
Save		Save the current parameters to the Quick Parameters page. Up to 4 parameter sets can be saved.
Load		Load the saved parameters from the Quick Parameters page.
Back		Return to the previous page.

5.6 Favorites

This function allows users to save frequently used jobs to the memory or load saved jobs from the memory, enabling operation without a USB flash drive or computer.



Function		Function Explanation
Save		The system displays the latest file at the top of the list. Select a column from 1 to 10, then click the Save button to save the file to the machine memory.
Rename		Select a saved file, then click the Rename button to rename it.
View		Select a saved file, then click the View button to check the graphic/artwork.
Delete		Select a saved file, then click the Delete button to delete the file from the machine memory.
Cut		Select a saved file, then click the Cut button to run the job.
Home		Return to the home page.
Back		Return to the previous page.

6 Operation

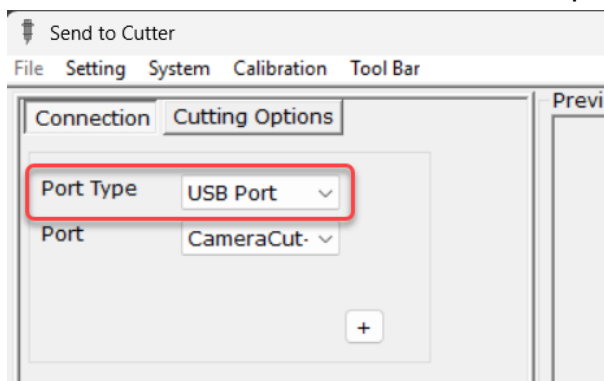
6.1 Data Transfer Methods

The ASC-350 series offers multiple data transfer methods, please refer to the following instructions for more information.

Connection Method	Instruction	Remark
USB Port	Send the file to the machine via USB cable.	Works with a computer/laptop
TCP/IP (Wi-Fi or Ethernet)	Send the file to the machine via Wi-Fi or Ethernet.	Works with a computer/laptop
U-File	Save the *.plt file to a USB flash drive, then read file from the machine.	Works without a computer/laptop

6.1.1 Transfer Data by USB Port

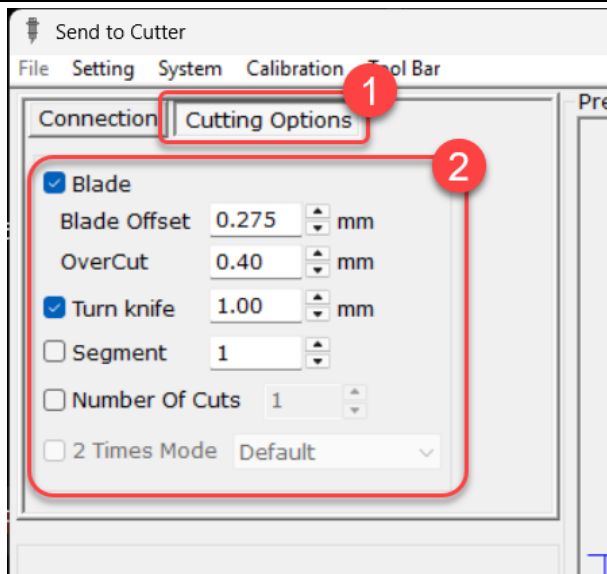
- 1) Select USB Port from the Port Type drop-down menu, then make sure to set to the correct machine from Port drop-down menu.



NOTE:

If more than one machine is connected, select the correct machine from the **Port** drop-down menu.

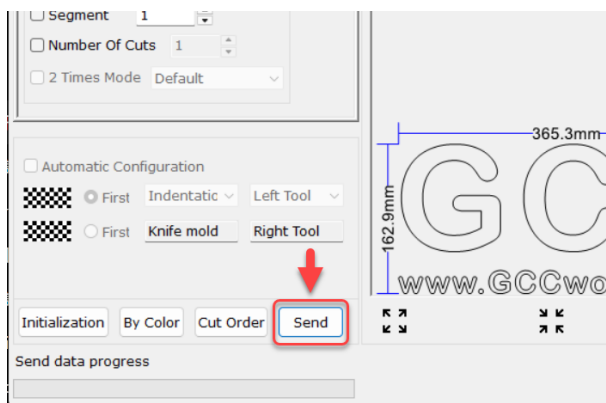
- 2) Click **Cutting Options** tabs to set the process parameters.

**NOTE:**

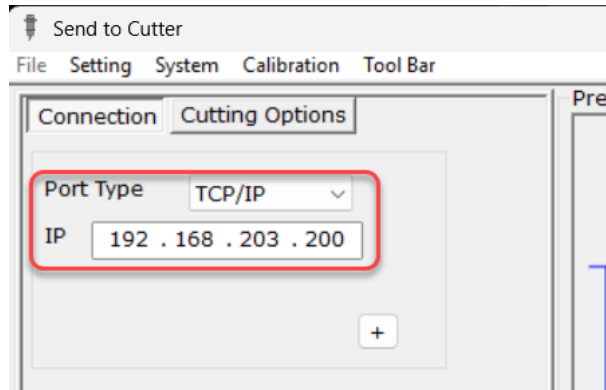
The ASC-350 series comes with two types of blades.

- Black blade (45° blade): For cutting thin media. The recommended offset value is 0.35 mm.
- Yellow blade (58° blade): For cutting thick media. The recommended offset value is 0.45–0.55 mm, depending on the

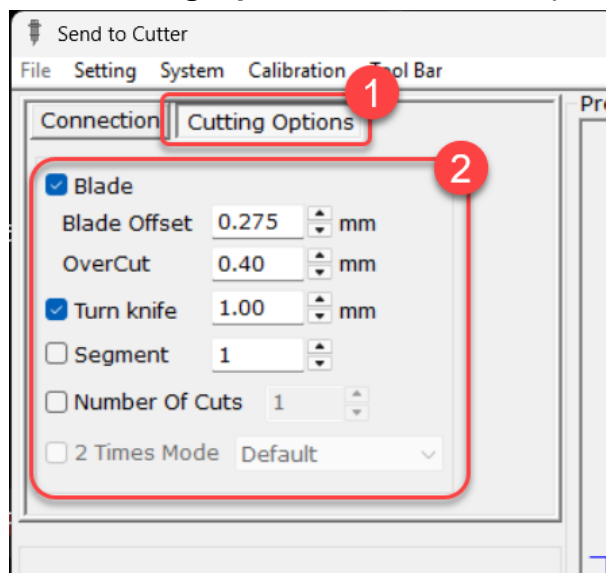
- 3) After setting the parameters, click the Send button. The file will be sent to the machine, and the job will start automatically.

**6.1.2 Transfer Data by TCP/IP**

- 1) Before sending file to the machine, please refer to chapter 5.2.2 to set up the connection.
- 2) Select TCP/IP from the **Port Type** drop-down menu, then make sure the IP address is the same as the machine IP address.

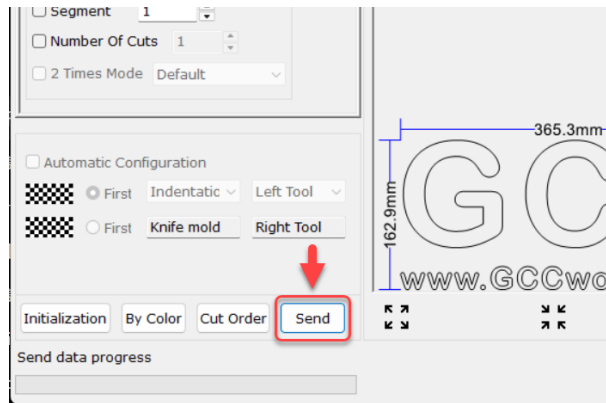


- 3) Click **Cutting Options** tabs to set the process parameters.



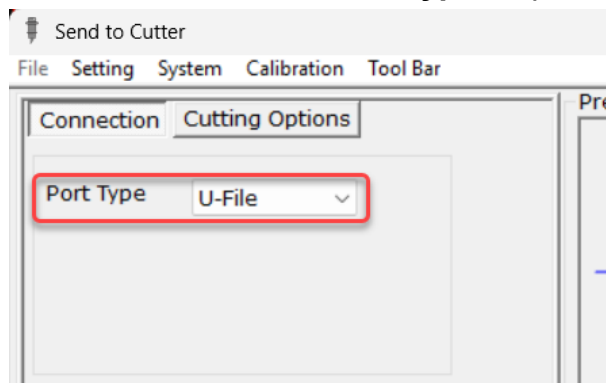
- 4) After setting the parameters, click the Send button. The file will be sent to

the machine, and the job will start automatically.

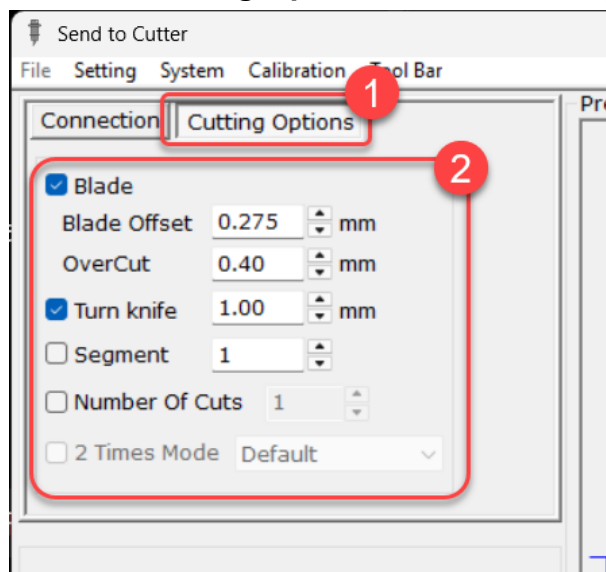


6.1.3 Transfer Data by U-File (USB flash drive)

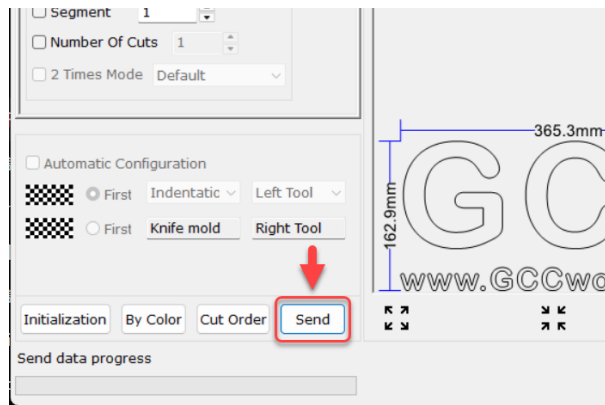
- 1) Select U-File from the **Port Type** drop-down menu.



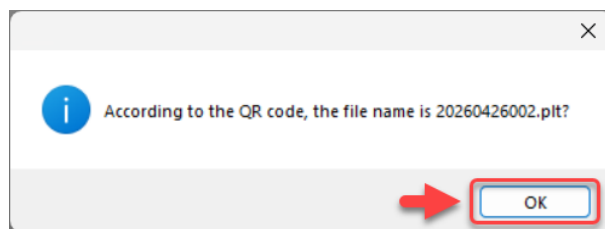
- 2) Click the **Cutting Options** tabs to set the process parameters.



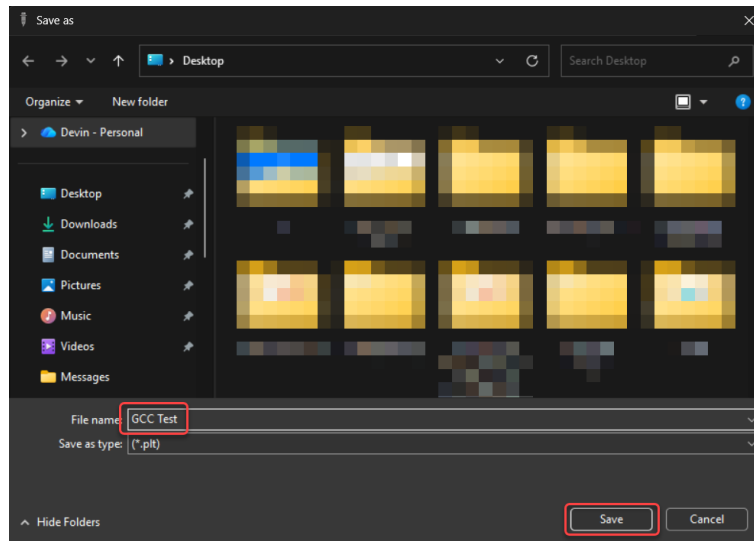
- 3) After setting the parameters, click the **Send** button.



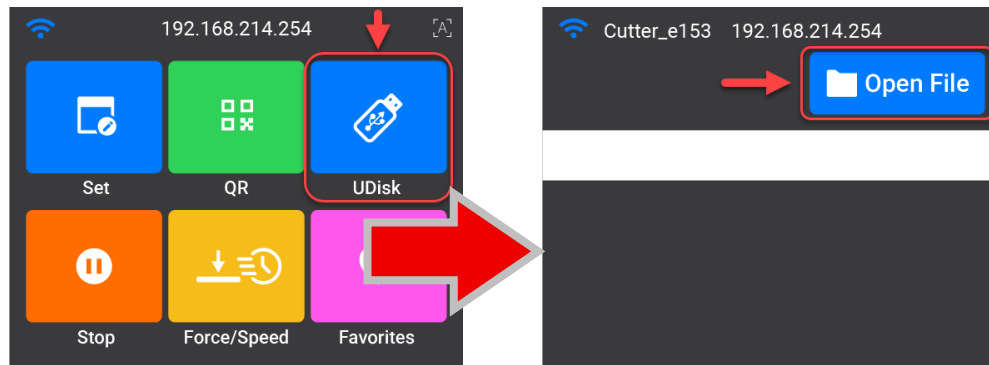
- 4) If the file includes a QR code, the system will display the file name generated based on the QR code. Click **OK** to continue.





- 5) The Save as window will appear. Enter the file name and click **Save** to save the *.plt file to your computer/laptop or USB flash drive.



- 6) If the *.plt file is saved to your computer/laptop, move it to the USB flash driver. Then plug the USB flash drive into the machine.
- 7) Tap **UDisk** on touch panel, then tap **Open File** button to read the *.plt file.



8) Before cutting, you can tap the  **View** button to check the job content.

9) Tap the , or  if the printed media includes a QR code, to run the job.


6.2 General Cutting Operation

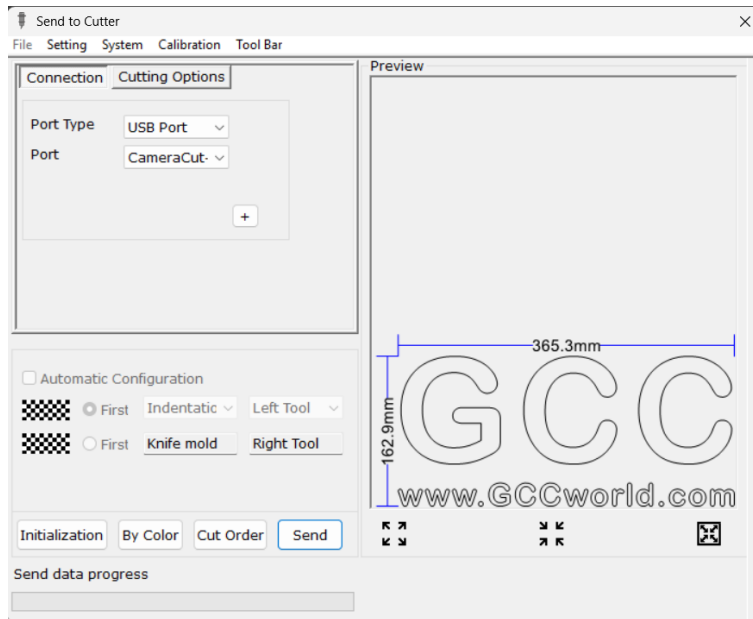
The ASC-350 series is equipped with a camera for reading registration marks and QR codes to perform precise cutting. It also supports general cutting, such as cutting simple shapes and text.

The following steps use CorelDRAW with a USB Port connection as an example.

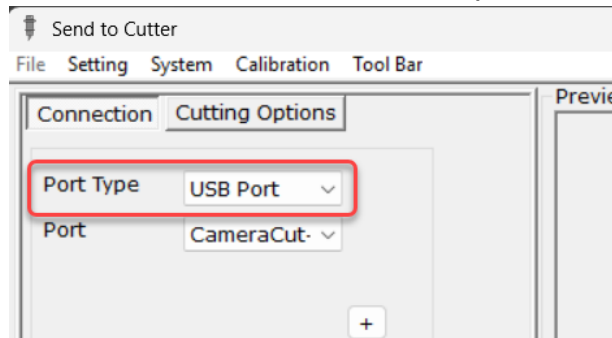
- 1) Run CorelDRAW and make sure the CameraCut plugin is running.
- 2) Place the media on the media tray.
- 3) Create or open your artwork.



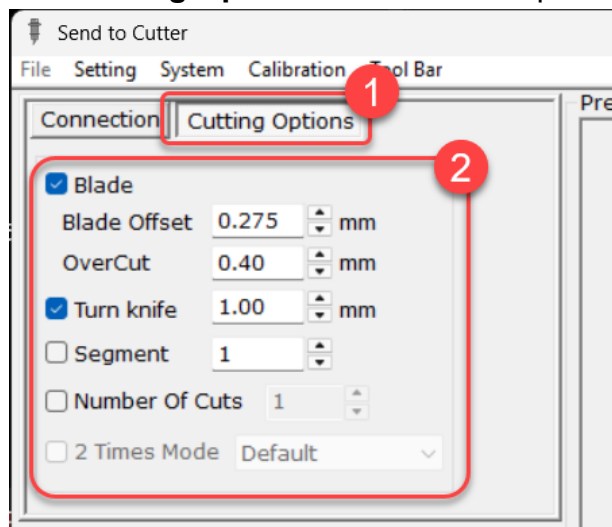
- 4) Select the objects you want to cut, then click the  button in the CameraCut plugin. The Cut/Plot window will appear.



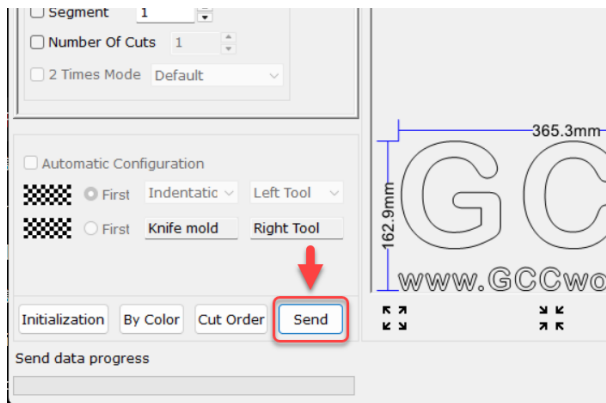
- 5) Select USB Port from the **Port Type** drop-down menu, then make sure to set to the correct machine from Port drop-down menu.



- 6) Click **Cutting Options** tabs to set the process parameters.



- 7) After setting the parameters, click the Send button. The file will be sent to the machine, and the job will start automatically.



6.3 Print and Cut Operation

6.3.1 Add registration marks and a QR Code for Printing

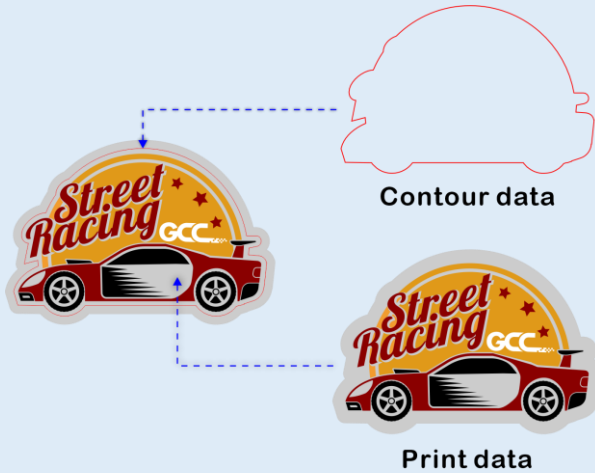
For print-and-cut applications, registration marks must be added to the artwork. We also recommend adding a QR code to make file matching easier. The following steps use CorelDRAW as an example.


- 1) Run CorelDRAW and make sure the CameraCut plugin is running.
- 2) Create or open your artwork.



NOTE:

If the artwork includes contour data, delete it or move it to a different sheet before printing to prevent the contour data from being printed.



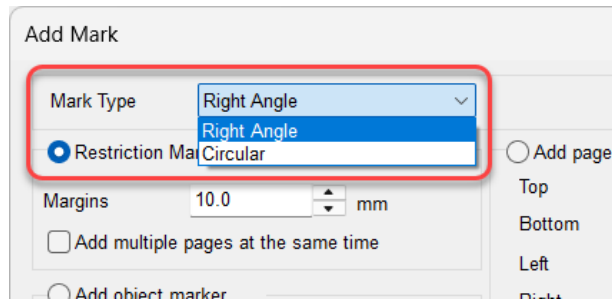
- 3) Click the  **Add Mark** button in the CameraCut plugin. The Add Mark window will appear.

The 'Add Mark' dialog box is shown with the following settings:

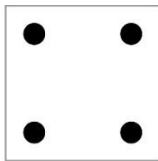
- Mark Type: Right Angle
- Restriction Mark for Sheet Label Cutter
 - Margins: 10.0 mm
 - Add multiple pages at the same time
- Add object marker
 - X Offset: 7.0 mm
 - Y Offset: 7.0 mm
 - Number: 1
- File Name Add QR Code
 - Quantity: 1
 - Size: 8 mm
 - Center to bottom distance: 9.5 mm
- Add page marker
 - Top: 10.0 mm
 - Bottom: 10.0 mm
 - Left: 10.0 mm
 - Right: 10.0 mm
 - Number: 1
 - Guide Line: 25.0 mm
- Other
 - Mark point size: 10.0 mm
 - Add middle mark on paper
 - Print mask around registration marks
 - Move right to select the contour line
 - 2 Times Working Mode

Buttons: Preview, Create, Delete

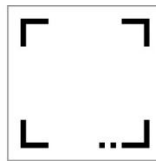
- 4) Select Circular or Right Angle from the Mark Type drop-down menu.



Refer to the following picture to identify the mark type.

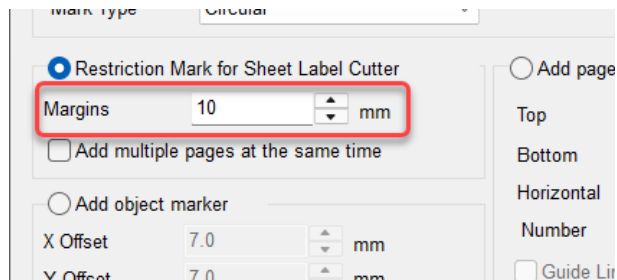


Circular Mark

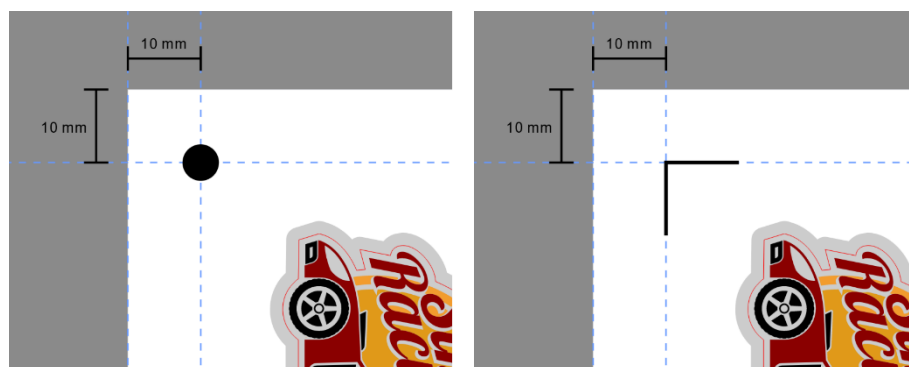


Right Angle Mark

- 5) Enter a value in the Margins field to set the distance between the registration marks and the media edge. For example, enter 10 mm.



Refer to the following picture to understand how the Margins



- 6) Select the Add QR Code function and enter the content to generate the

QR code. Please refer to the explanation below.

1 2	Select Add QR Code and enter the QR code content.
3	Set the quantity of QR codes. We recommend selecting 2 from the Quantity drop-down menu so that you do not need to worry about the media direction when placing the media on the media tray.
4	Set the QR code size in the Size field. Based on our experience, 8 mm is large enough for the ASC-350 series to read.
5	Set the distance from the center of the QR code to the bottom edge of the media.


- 7) After completing the settings, click the **Create** button to generate the registration marks and QR code in CorelDRAW. You can then print the artwork using a digital printer or toner printer.

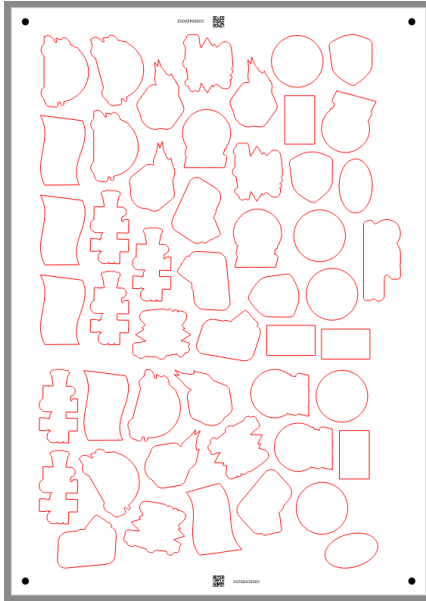


6.3.2 Output the file


After adding registration marks and QR code, follow the steps below to output the file to the machine. This example uses U-File.

- 1) Place printed media on the media tray.

- 2) Open the contour file in CorelDRAW and click the  button. The Send to Cutter window will appear





- 3) Refer to chapter 6.1.3 to convert the file to *.plt format, then move it to a USB flash drive.

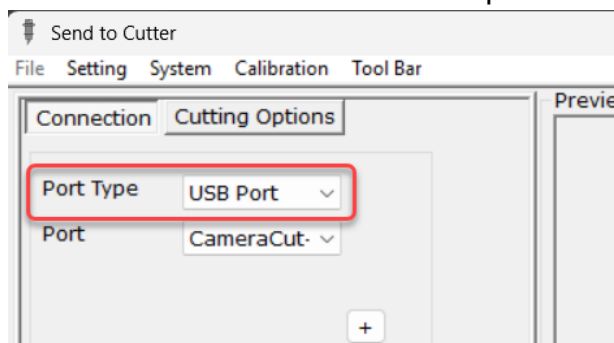
- 4) Plug the USB flash drive into the machine, then tap the  button on touch panel home page to run the job. The machine will feed media, read QR code, match the corresponding file from the USB flash drive, and then start cutting.

6.4 Perforation Cutting (Dashed Line Cutting) Operation

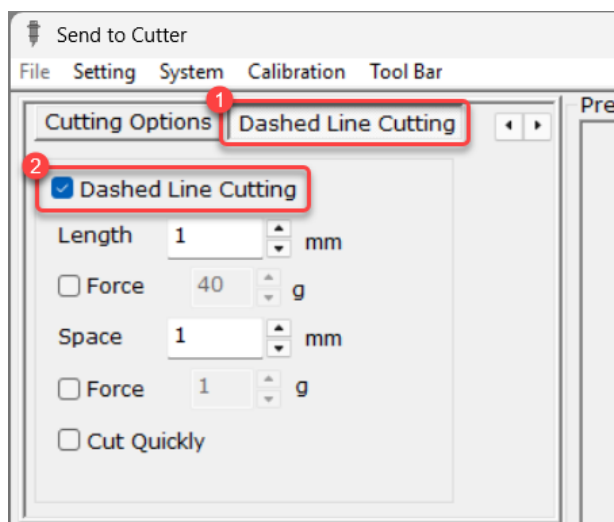
The ASC-350 supports perforation cutting. Follow the steps below to complete the operation.

The following steps use CorelDRAW with a USB Port connection as an example.

- 1) Place the media on the media tray.
- 2) Create or open the artwork.
- 3) Select the object you want to process, then click the  or  button. The Send to Cutter window will appear.
- 4) Select USB Port from the **Port Type** drop-down menu, then make sure to set to the correct machine from Port drop-down menu.

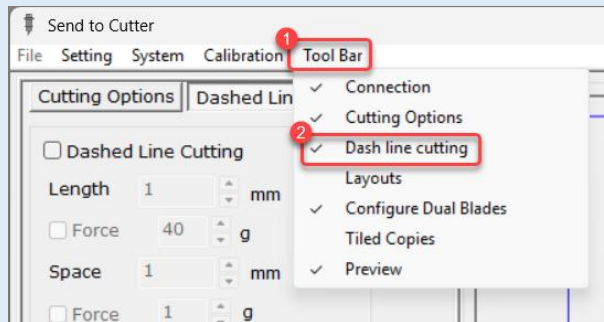


- 5) Click **Dashed Line Cutting** tabs, then check the Dashed Line Cutting to activate the function.

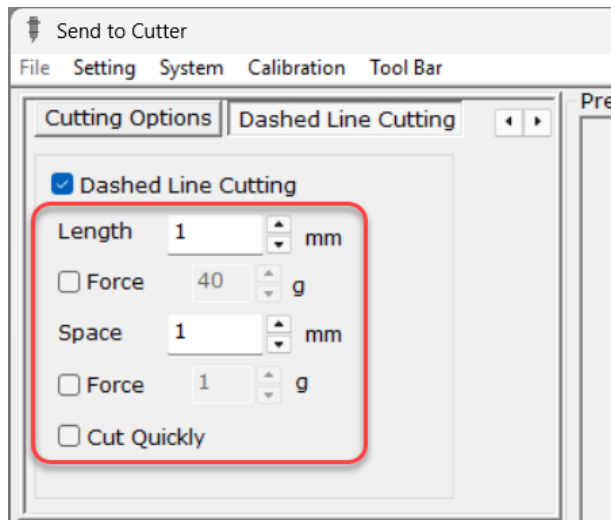


NOTE:

If the Dashed Line Cutting tab is not displayed, go to the menu bar and select Tool Bar > Dashed Line Cutting to enable this function.

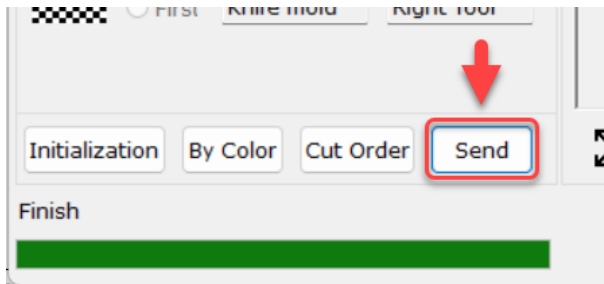


- 6) Set the parameters for dashed line cutting. Refer to the following instructions for more information.



Length	Set the dashed cutting length.
Force	Set the cutting force for the dashed segments when controlling the force from the software.
Space	Set the non-cutting length between dashed segments.
Force	Set the cutting force for the non-cutting segments when controlling the force from the software.
Cut Quickly	Increase the cutting speed. Please note that cutting quality may be reduced.

- 7) Click Send button to run the job.



- 8) Refer to the following picture for the result.





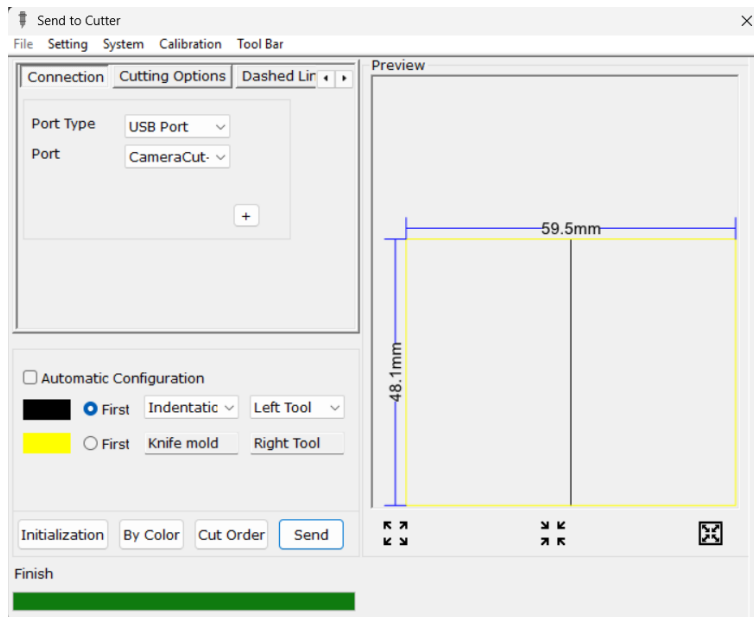
6.5 Creasing Operation (ASC-350D only)

The following steps use CorelDRAW with a USB Port connection as an example. The ASC-350D is equipped with a rotary wheel creasing tool that creates true crease lines for folding applications. Please follow the steps below to complete the creasing operation.

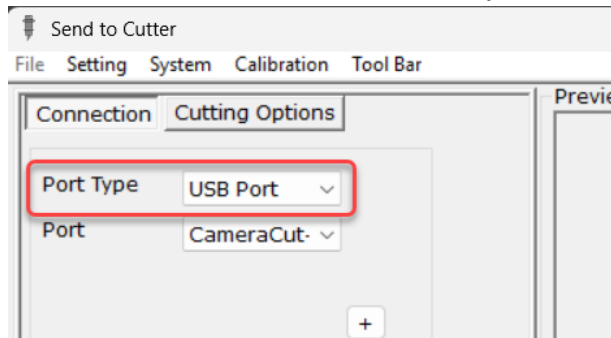
The following steps use CorelDRAW with a USB Port connection as an example.

- 1) Place the media on the media tray.
- 2) Create or open the artwork.

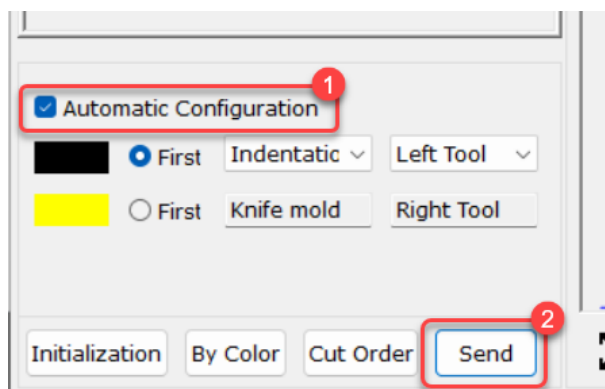
- 3) Select the object you want to process, then click the  or  button.
The Send to Cutter window will appear.



- 4) Select USB Port from the **Port Type** drop-down menu, then make sure to set to the correct machine from Port drop-down menu.



- 5) Enable **Automatic Configuration** so the software can automatically determine the cutting order and tool. Then click **Send** to run the job.



NOTE:

- If the colors are not identification correctly, make sure the drawing software is set to RGB color mode.
- Make sure the color and tool settings are correct before sending job.

6) Refer to the following picture for the result.



7 Appendix

7.1 ASC-350 Series Specification

Model	ASC-350	ASC-350D
Max. Media Width	370mm	
Max. Cutting Width	350mm	
Max. Media Thickness	0.8mm (600 ~ 700 gsm)	
Max. Media Length	600 mm	
Auto Contour Cut	Camera (Automatically Contour Cutting)	
Control	Touchscreen	
Motor	Servo motor	
Max. Force	1500g	L:3000g / R:1500g
Number of heads	1	2
Cutting Precision	±0.01mm	
Repeat Precision	0.082mm	
Max. Empty Running Speed	1600mm/S	
Max. Cutting Speed	1600mm/S	
Packing Size	890 x 570 x 560mm	940 x 610 x 580mm
Gross	49.5KG	56.5KG
Connector Interface	USB A (flash disk) / WiFi (option) / USB B (connection) / Ethernet	
Working Environment	+5 °C -+35 °C	